

Wildflowers to Spot - Tick When Found!



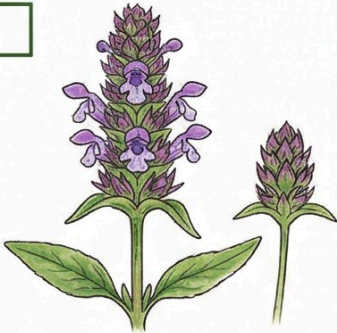
Dandelion- bright yellow, first food for bees



White Clover - beloved by bumblebees



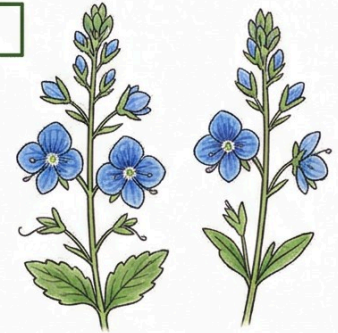
Common Daisy - cheerful and pretty



Selfheal- small purple flowers, great for bees



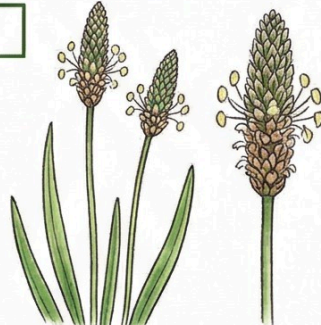
Bird's-foot Trefoil - yellow, looks like tiny slippers



Germander Speedwell tiny bright blue flowers



Yarrow- white flattopped clusters



Ribwort Plantain - tall narrow seed head



Red Clover- pinkish-purple pompom flowers



Oxeye Daisy - large white daisy



Buttercup classic yellow cup shape



Lesser Celandine - starry-early bloomer



Wildlife to Spot — Tick When Found!

Bumblebee (any species)
— fluffy and flying

Spider — look
for webs in the
long grass



**Small
Tortoiseshell**

**Common Blue
Butterfly**



Honeybee — slimmer,
busy on clover



Solitary Bee
— smaller, often
hovering

Hoverfly — looks like
a bee, hovers mid-air



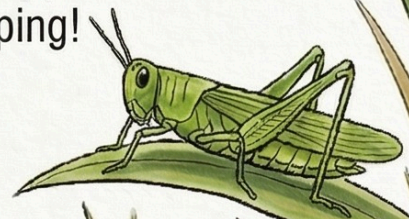
Ladybird — red
with black spots



**Red Admiral
Butterfly** — striking
black with orange bands.

Grasshopper — listen for
the chirping!

Earthworm — spotted
during or after rain



Ground Beetle — black,
fast, hides in grass

